


Table of Contents

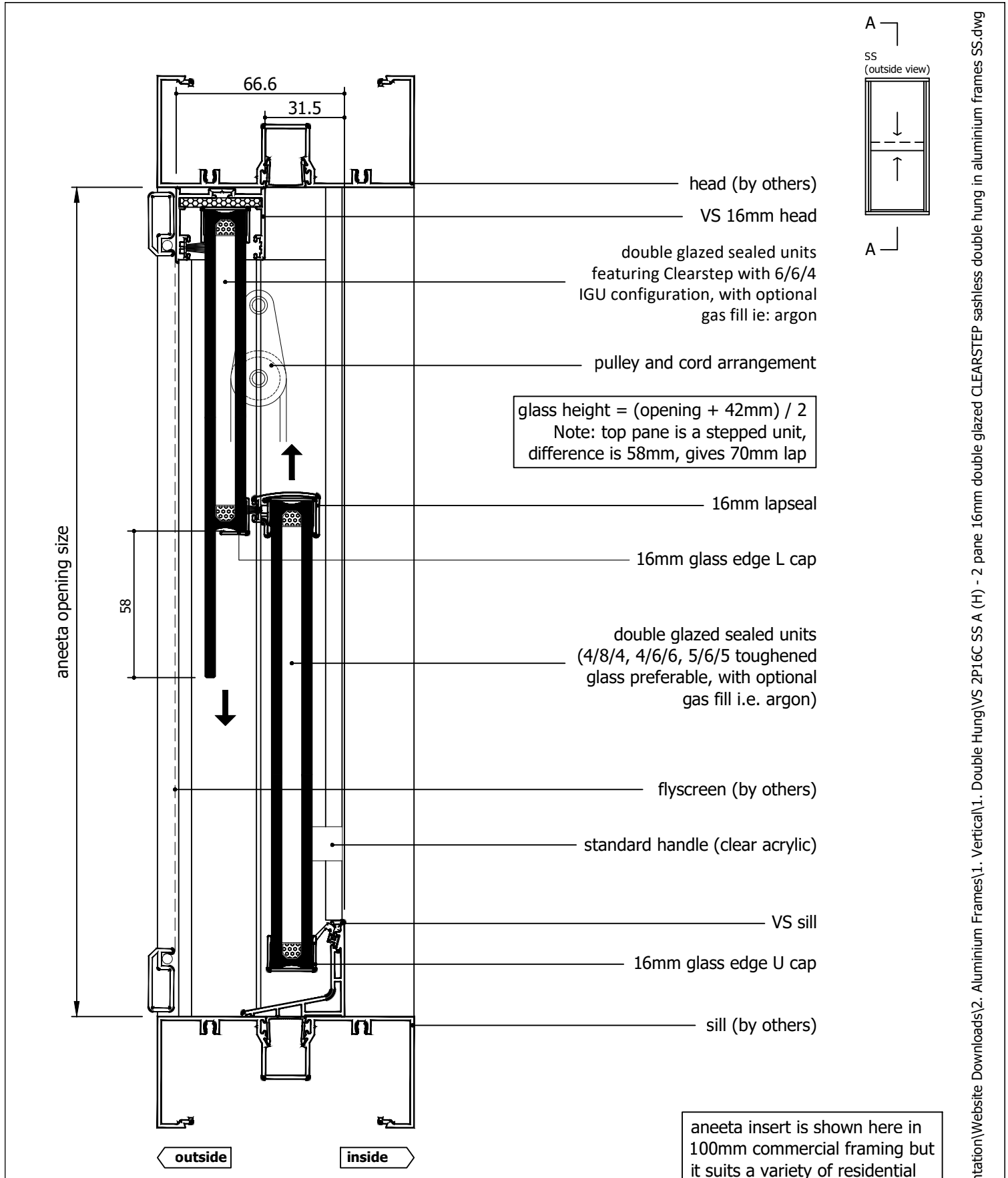
Page	View	Variant
2	Vertical Section	VS Sill
3	Vertical Section	VS HP Sill
4	Vertical Section	No Sill
5	Horizontal Section	-

Rev	Description	Approved By	Date
H	Delete P008 and replace with P229 - VS Sill	DF	14/8/2025
G	Description for 16mm Clearstep IGU makeup added	DF	Jul2025
F	VS 300Pa/800Pa sill adaptor changed to VS Sill/VS HP Sill	DF	Sep2024
E	Add sill options: 800Pa Sill, No Sill, 16mm Flapseal	SE	May2024
D	Update lock	SE	Sep2020
C	Update lock, change layout	-	Jun2013
B	Updated sill	SB	Nov2010

<div>Proprietary and confidential</div> <div>The information contained in this drawing is the sole property of Aneeta Australia. Any reproduction in part or as a whole, without the written permission of Aneeta Australia is prohibited.</div>	Title: 2 pane 16mm double glazed clearstep sashless double hung in aluminium frames SS				<div> 949 Stud Road, Rowville VIC 3178, ABN 80 062 883 729</div>	Material: in Aluminium Frame	
						Finish:	
						Die/Part:	
						Dwg No: VS 2P16C SS A	
	Drwn: UF		Chk:	Date: Jan 2010		Scale:	Sheet 1 of 5




IF IN DOUBT ASK - DO NOT SCALE DRAWING



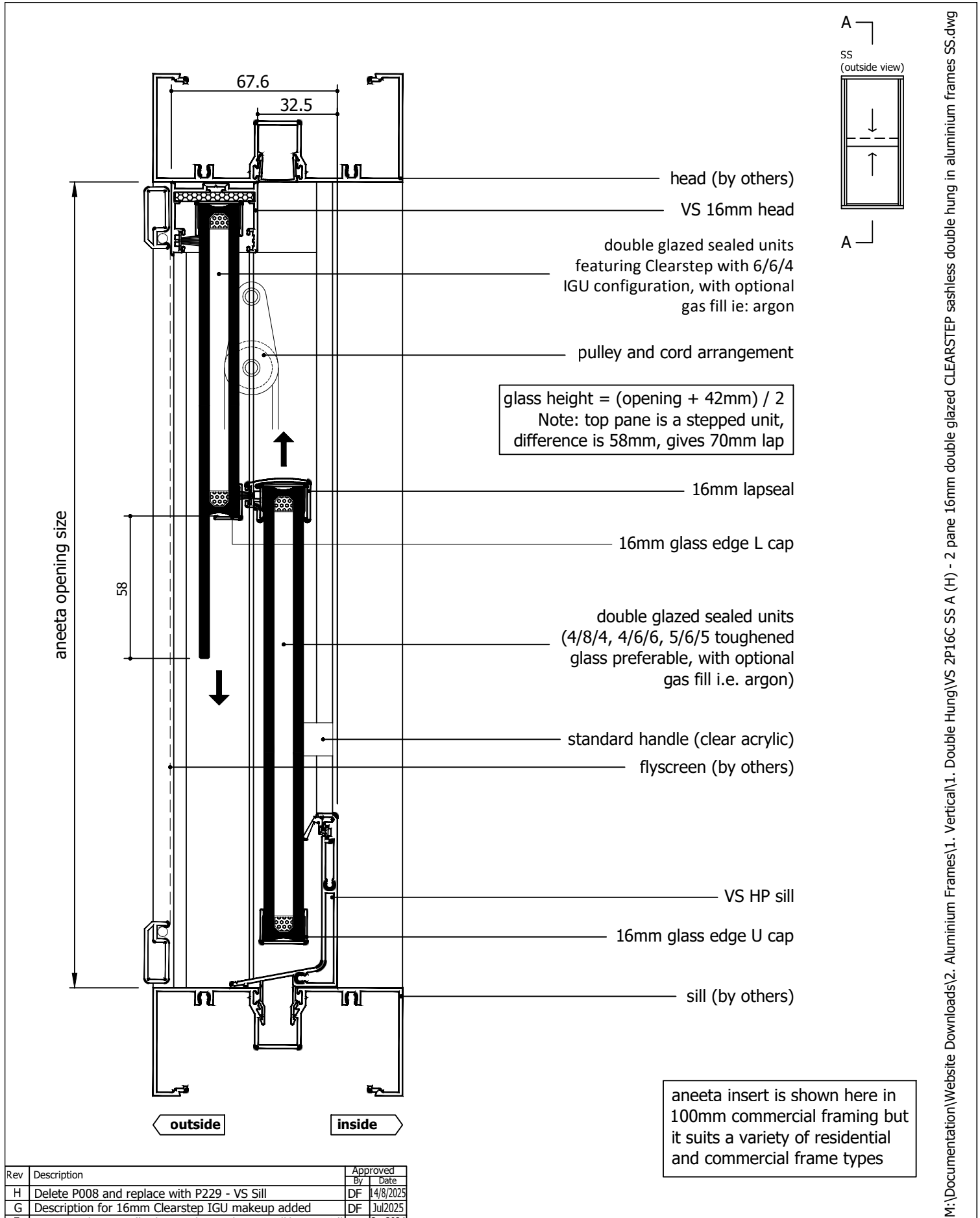
glass height = (opening + 42mm) / 2
Note: top pane is a stepped unit,
difference is 58mm, gives 70mm lap

aneeta insert is shown here in
100mm commercial framing but
it suits a variety of residential
and commercial frame types


Rev	Description	Approved By	Date
H	Delete P008 and replace with P229 - VS Sill	DF	14/8/2025
G	Description for 16mm Clearstep IGU makeup added	DF	Jul2025
F	VS 300Pa/800Pa sill adaptor changed to VS Sill/VS HP Sill	DF	Sep2024
E	Add sill options: 800Pa Sill, No Sill, 16mm Flapseal	SE	May2024
D	Update lock	SE	Sep2020
C	Update lock, change layout	-	Jun2013
B	Updated sill	SB	Nov2010

<div>Proprietary and confidential</div> <div>The information contained in this drawing is the sole property of Aneeta Australia. Any reproduction in part or as a whole, without the written permission of Aneeta Australia is prohibited.</div>	<div>Title: 2 pane 16mm double glazed clearstep sashless double hung in aluminium frames SS with VS sill & aluminium covers vertical section A-A</div>				<div> 949 Stud Road, Rowville VIC 3178, ABN 80 062 883 729</div>	<div>Material: in Aluminium Frame</div>		
						<div>Finish:</div>		
						<div>Die/Part:</div>		
						<div>Dwg No: VS 2P16C SS A</div>		
	<div>Drwn: UF Chk: Date: Jan 2010 Scale: 1:20 A4</div>					<div>Revision: H</div>		
<div>Sheet 2 of 5</div>								

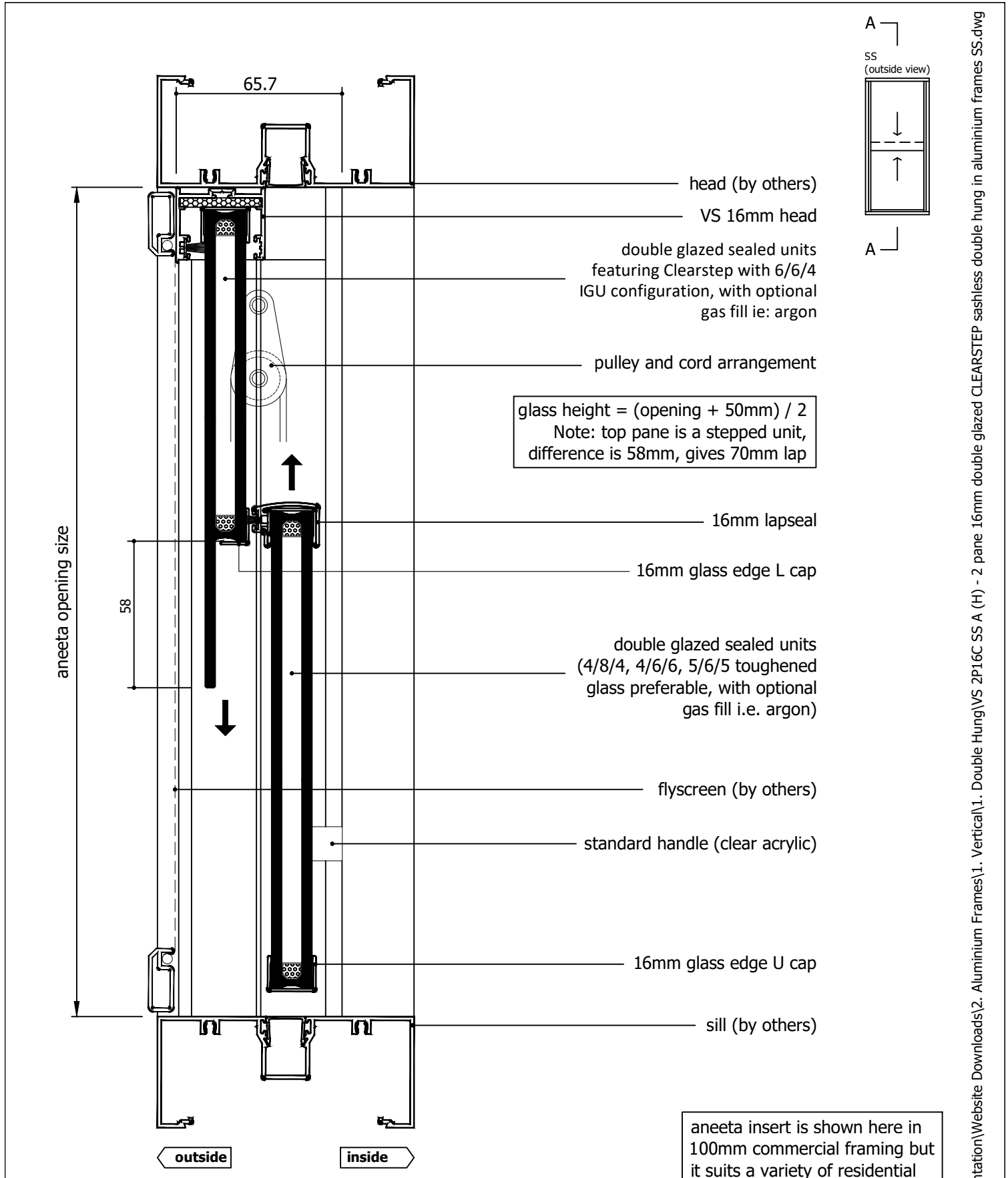
M:\Documentation\Website Downloads\2. Aluminium Frames\1. Vertical\1. Double Hung\VS 2P16C SS A (H) - 2 pane 16mm double glazed CLEARSTEP sashless double hung in aluminium frames SS.dwg



Rev	Description	Approved By	Date
H	Delete P008 and replace with P229 - VS Sill	DF	14/8/2025
G	Description for 16mm Clearstep IGU makeup added	DF	Jul2025
F	VS 300Pa/800Pa sill adaptor changed to VS Sill/VS HP Sill	DF	Sep2024
E	Add sill options: 800Pa Sill, No Sill, 16mm Flapseal	SE	May2024
D	Update lock	SE	Sep2020
C	Update lock, change layout	-	Jun2013
B	Updated sill	SB	Nov2010

<div>Proprietary and confidential</div> <div>The information contained in this drawing is the sole property of Aneeta Australia. Any reproduction in part or as a whole, without the written permission of Aneeta Australia is prohibited.</div>	Title: 2 pane 16mm double glazed clearstep sashless double hung in aluminium frames SS with VS HP sill & aluminium covers vertical section A-A				<div> 949 Stud Road, Rowville VIC 3178, ABN 80 062 883 729</div>	Material: in Aluminium Frame		
						Finish:		
						Die/Part:		
						Dwg No: VS 2P16C SS A		
Drwn: UF	Chk:	Date: Jan 2010	Scale: 1:2@A4	Sheet 3 of 5	Revision: H			


M:\Documentation\Website Downloads\2. Aluminium Frames\1. Vertical\1. Double Hung\VS 2P16C SS A (H) - 2 pane 16mm double glazed CLEARSTEP sashless double hung in aluminium frames SS.dwg



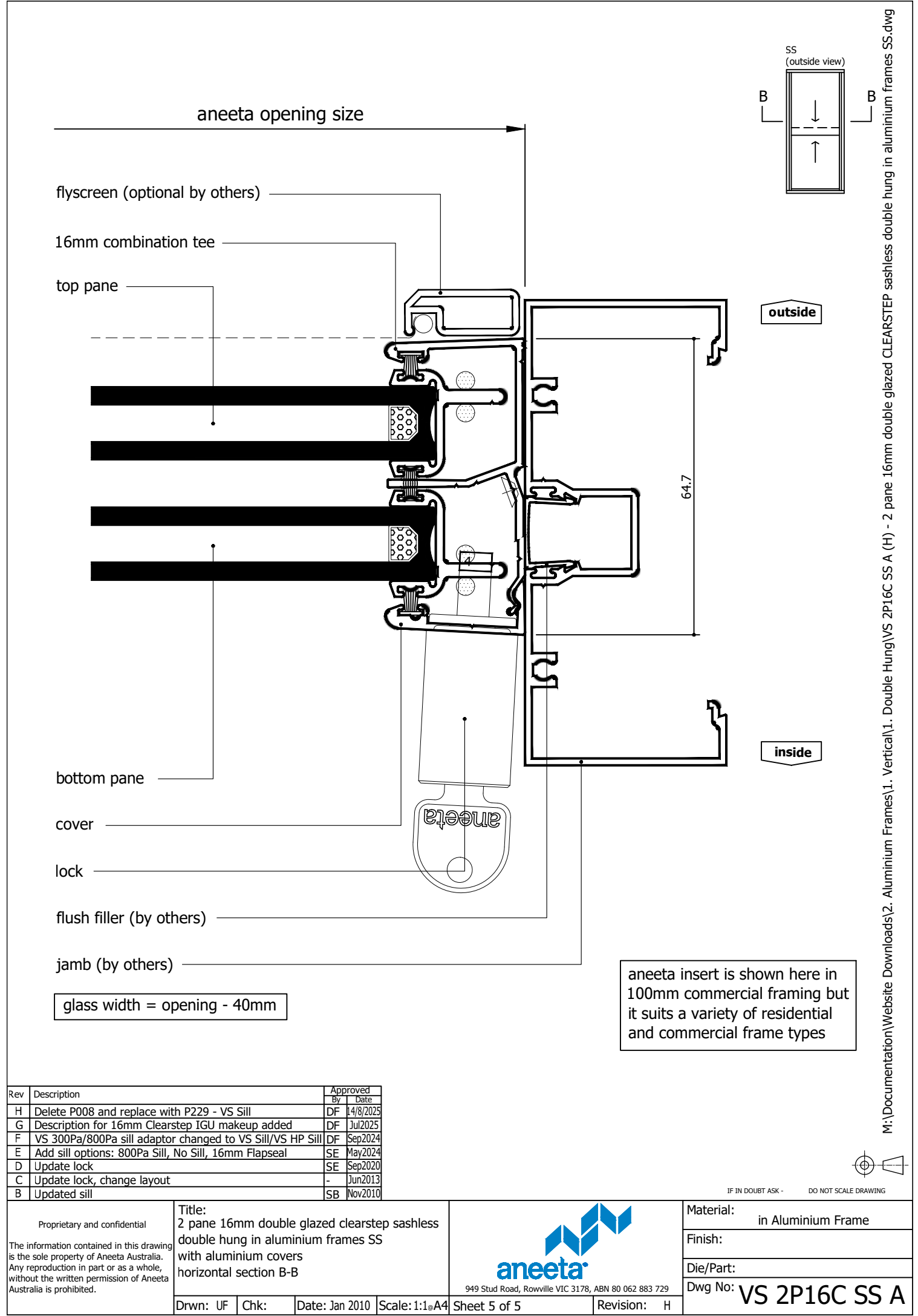
glass height = (opening + 50mm) / 2
Note: top pane is a stepped unit,
difference is 58mm, gives 70mm lap

aneeta insert is shown here in
100mm commercial framing but
it suits a variety of residential
and commercial frame types

Rev	Description	Approved By	Date
H	Delete P008 and replace with P229 - VS Sill	DF	14/8/2025
G	Description for 16mm Clearstep IGU makeup added	DF	Jul2025
F	VS 300Pa/800Pa sill adaptor changed to VS Sill/VS HP Sill	DF	Sep2024
E	Add sill options: 800Pa Sill, No Sill, 16mm Flapseal	SE	May2024
D	Update lock	SE	Sep2020
C	Update lock, change layout	-	Jun2013
B	Updated sill	SB	Nov2010

<div>Proprietary and confidential</div> <div>The information contained in this drawing is the sole property of Aneeta Australia. Any reproduction in part or as a whole, without the written permission of Aneeta Australia is prohibited.</div>	Title: 2 pane 16mm double glazed clearstep sashless double hung in aluminium frames SS with no sill & aluminium covers vertical section A-A				<div></div> <div>949 Stud Road, Rowville VIC 3178, ABN 80 062 883 729</div>	Material: in Aluminium Frame		
						Finish:		
						Die/Part:		
						Dwg No: VS 2P16C SS A		
Drwn: UF	Chk:	Date: Jan 2010	Scale: 1:20 A4	Sheet 4 of 5	Revision: H			

M:\Documentation\Website Downloads\2. Aluminium Frames\1. Vertical\1. Double Hung\VS 2P16C SS A (H) - 2 pane 16mm double glazed CLEARSTEP sashless double hung in aluminium frames SS.dwg



M:\Documentation\Website Downloads\2. Aluminium Frames\1. Vertical\1. Double Hung\VS 2P16C SS A (H) - 2 pane 16mm double glazed CLEARSTEP sashless double hung in aluminium frames SS.dwg